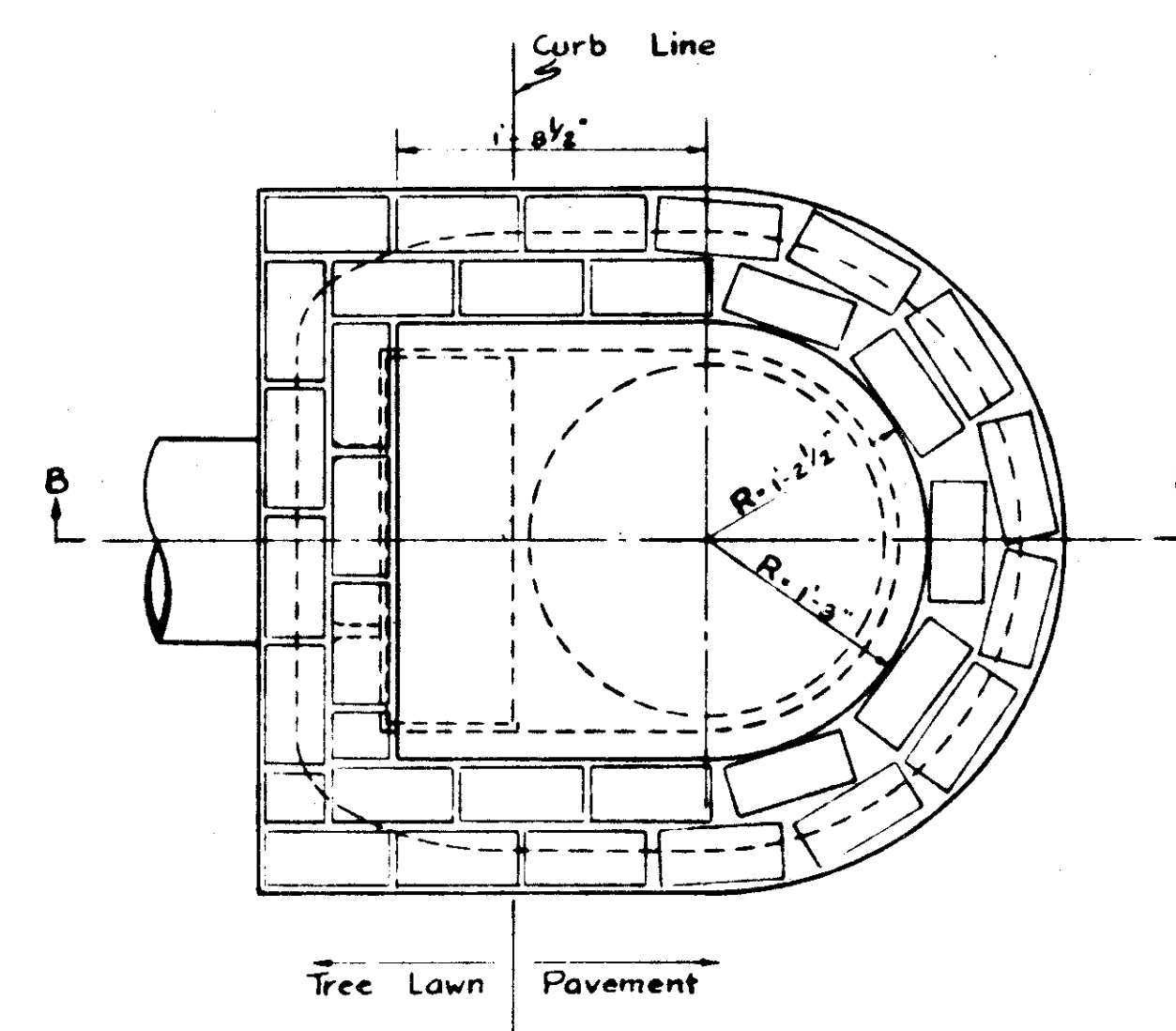
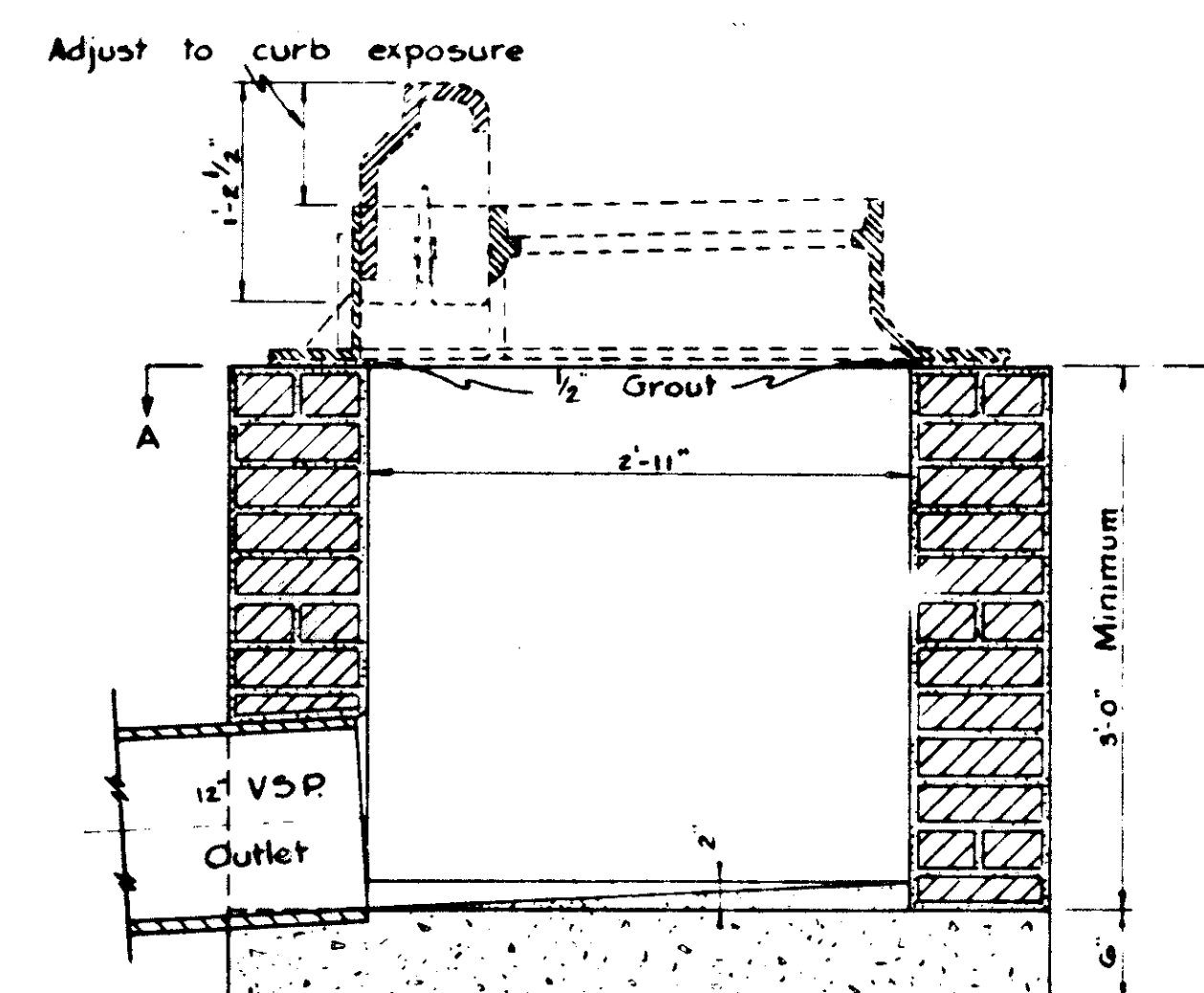


## SPECIAL CURB INLET No 4



PLAN INLET BASIN  
VIEW 'A-A'  
Scale: 1"=1'-0"

Position of casting shown in dashed lines



SECTION 'B-B'

### NOTES:

#### BRICK WALLS:

Brick walls shall be 6" thick and plastered on the inside and outside with 1:2 cement mortar 1/2" thick. Concrete sidewalls, where used in place of brick, shall be made 6" thick of Class "C" concrete.

#### OUTLET:

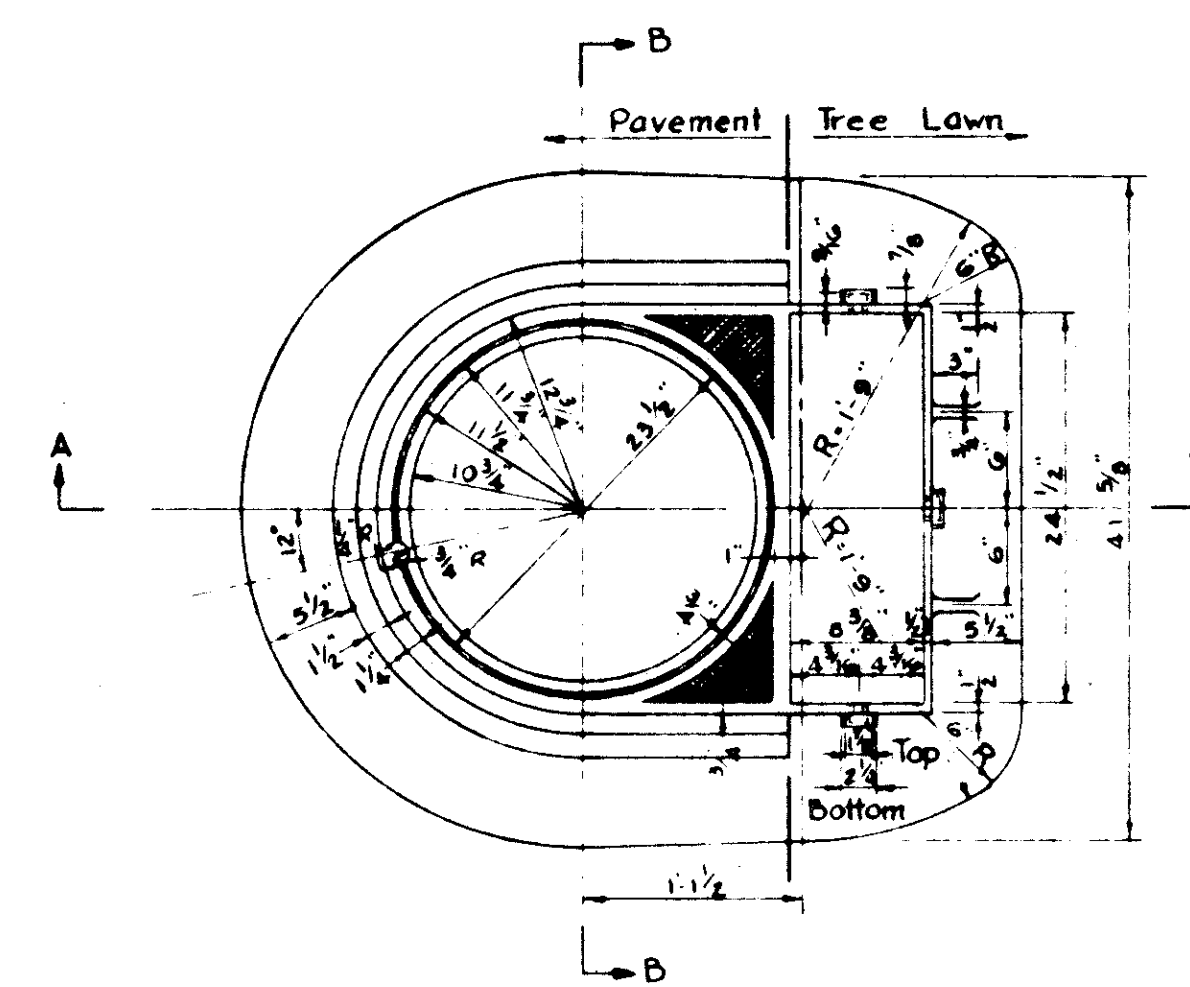
The outlet shall be of the size shown on the Plans and may be constructed in any side.

#### BOTTOM:

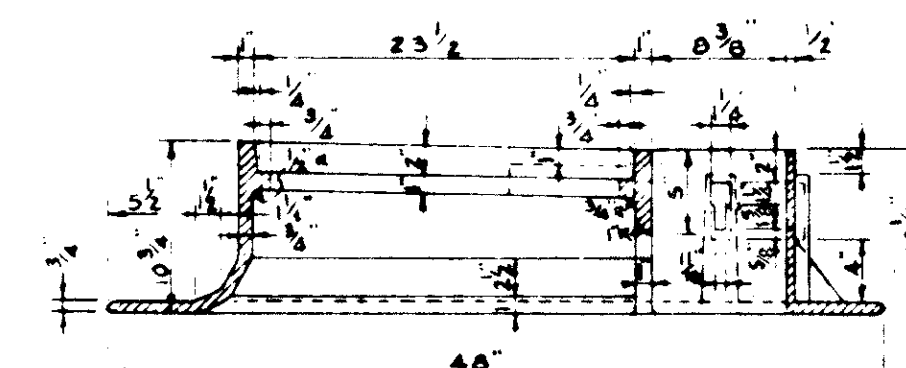
The bottom shall be built as per Plan, of Class "C" concrete, or of 2 courses of brick, set in mortar.

#### CASTING:

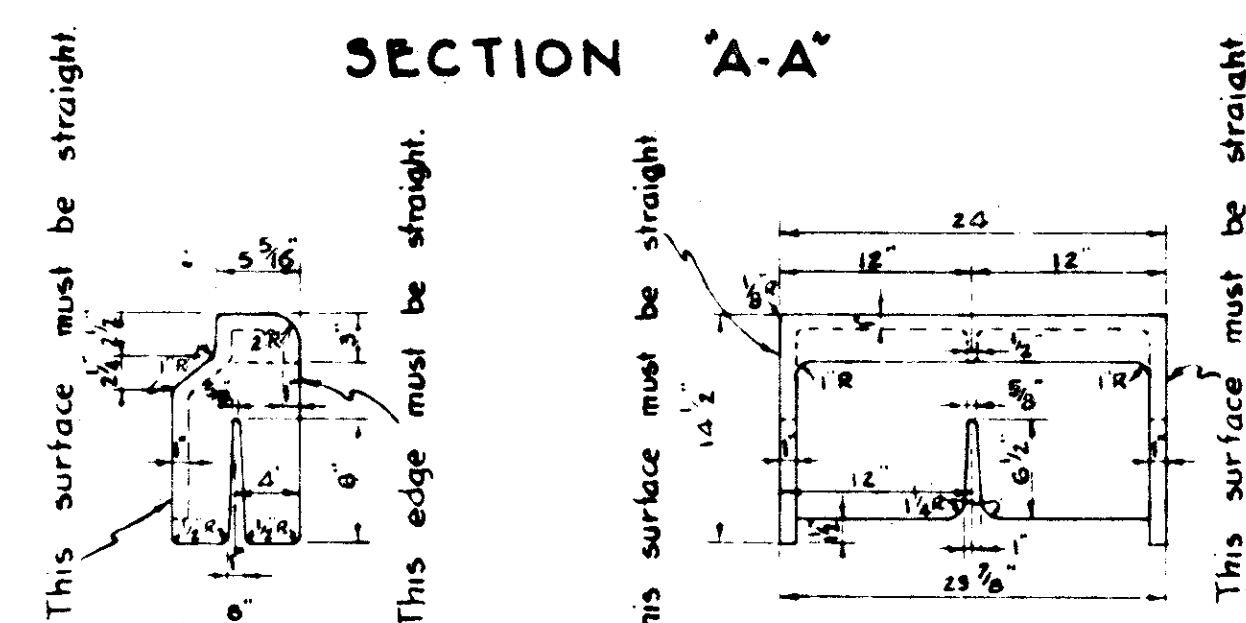
Casting to be in accordance with Section M-78 of the Material Details.



PLAN FRAME  
(CAST IRON)



SECTION 'A-A'



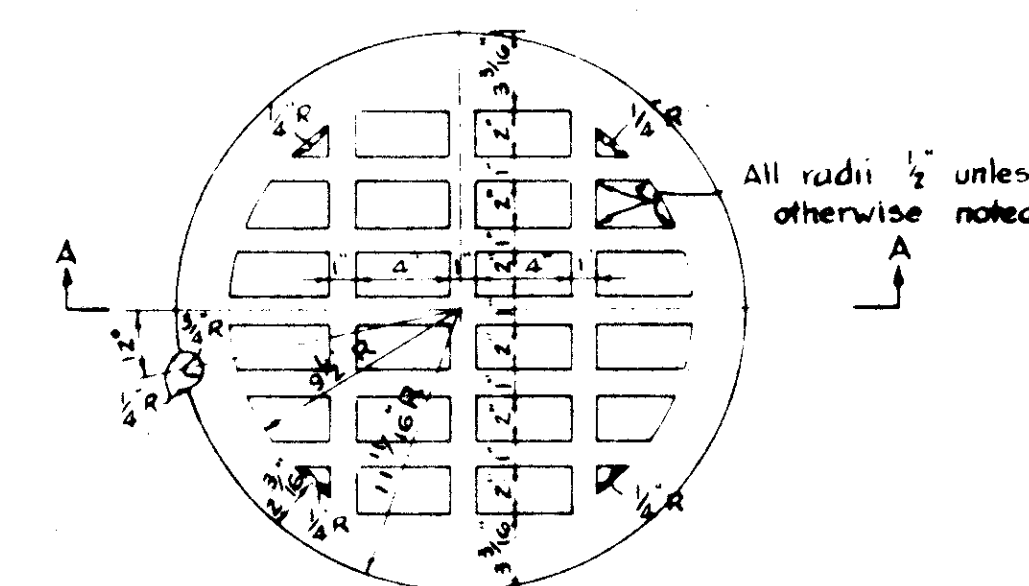
END VIEW FRONT ELEVATION  
CURB BOX

CITY STANDARD CATCH BASIN FRAME  
AND CAST IRON CURB BOX

Scale: 1"=1'-0"

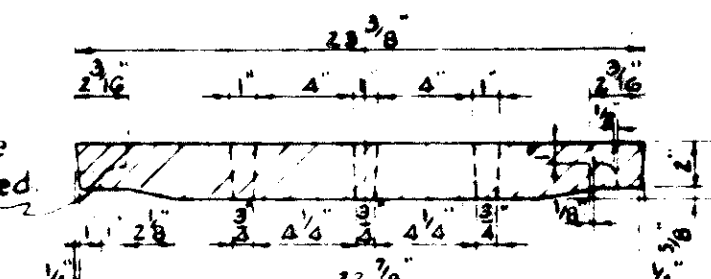
SECTION 'B-B'

Note:  
Cover seat surface to be chilled & chipped or ground to smooth round regular edge

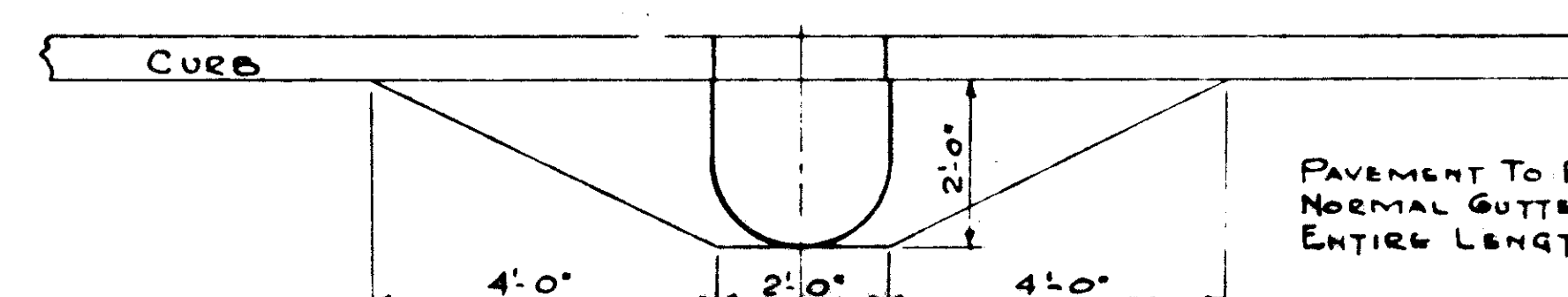


PLAN  
CITY STANDARD CAST IRON  
CATCH BASIN COVER  
Scale: 1/2"=1'-0"

This surface shall be smooth, straight & chilled

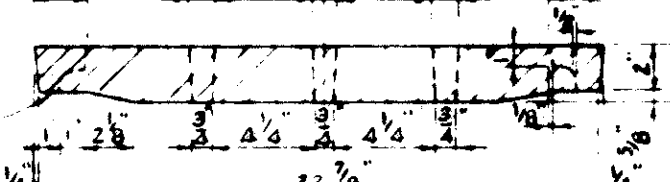


SECTION 'A-A'

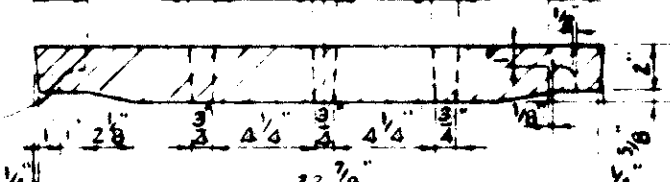


DETAIL FOR DEPRESSING PAVEMENT  
FOR ABOVE STRUCTURES

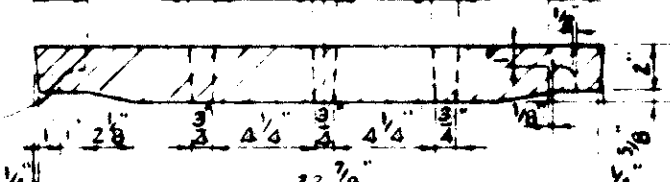
PAVEMENT TO BE DEPRESSED 2" BELOW NORMAL GUTTER ALONG CURB LINE FOR ENTIRE LENGTH OF CURB OPENING.



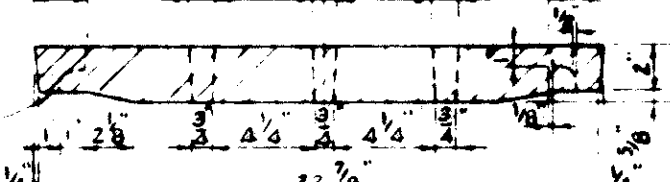
SECTION 'A-A'



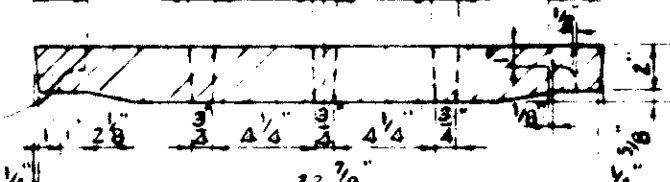
SECTION 'A-A'



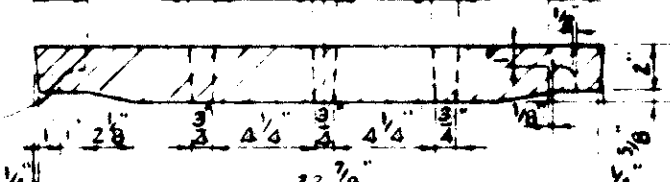
SECTION 'A-A'



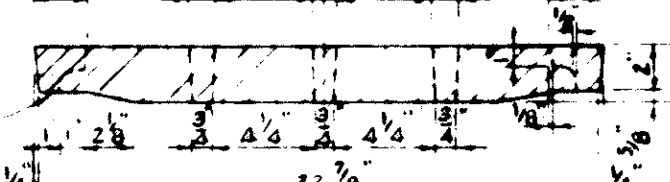
SECTION 'A-A'



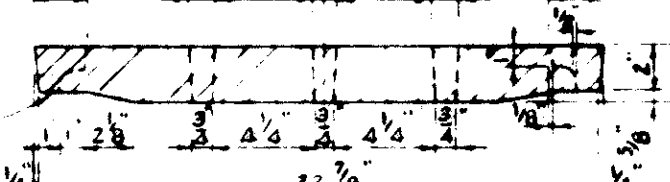
SECTION 'A-A'



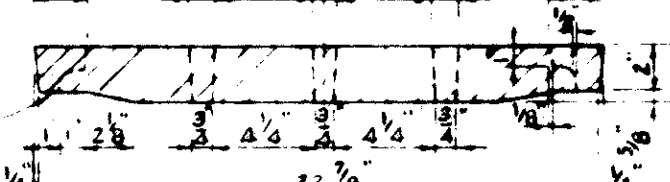
SECTION 'A-A'



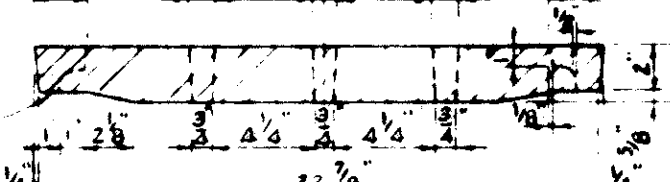
SECTION 'A-A'



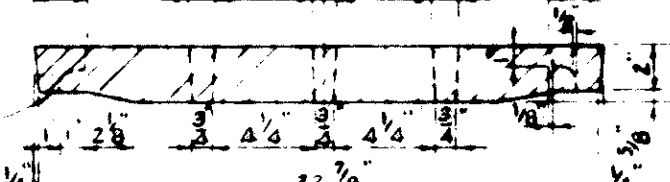
SECTION 'A-A'



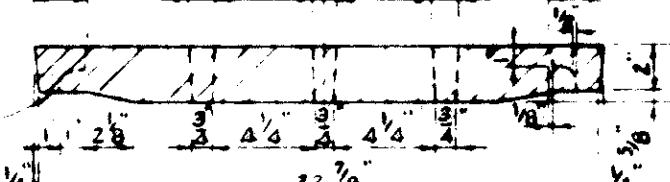
SECTION 'A-A'



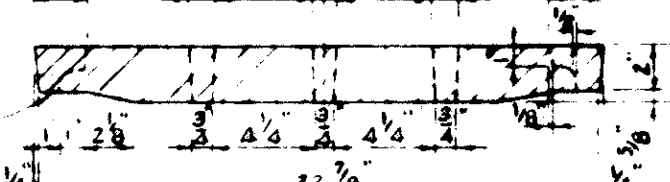
SECTION 'A-A'



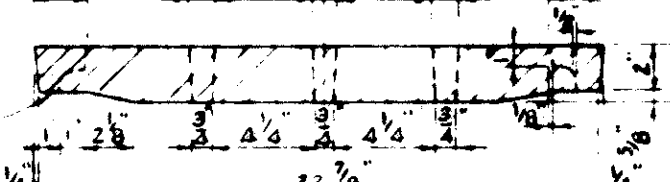
SECTION 'A-A'



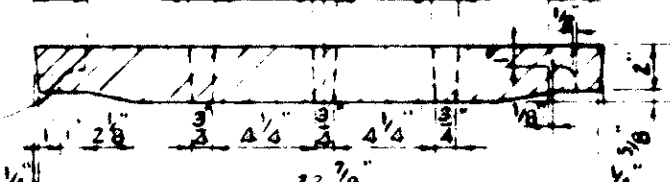
SECTION 'A-A'



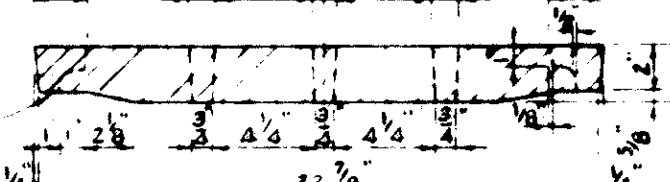
SECTION 'A-A'



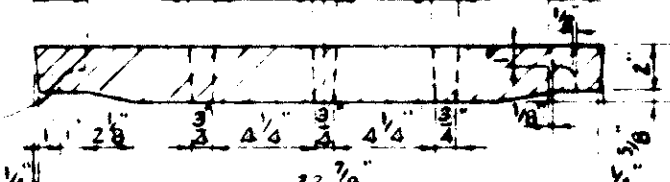
SECTION 'A-A'



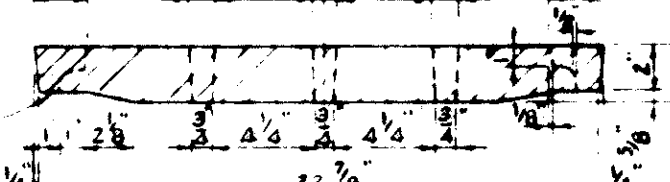
SECTION 'A-A'



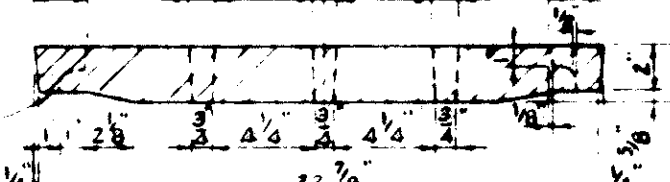
SECTION 'A-A'



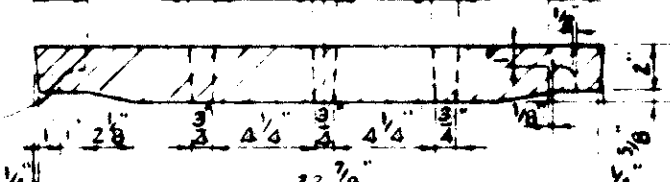
SECTION 'A-A'



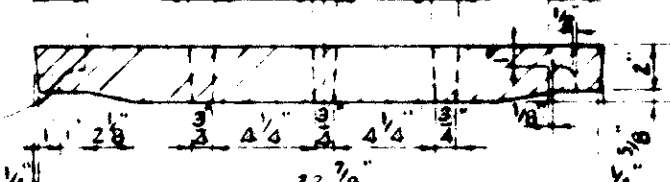
SECTION 'A-A'



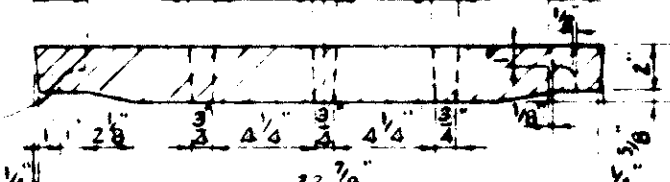
SECTION 'A-A'



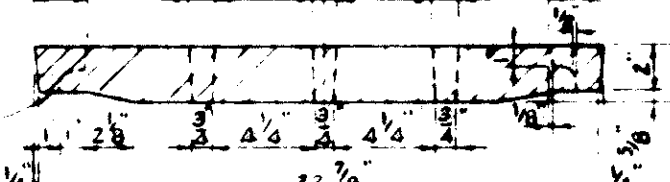
SECTION 'A-A'



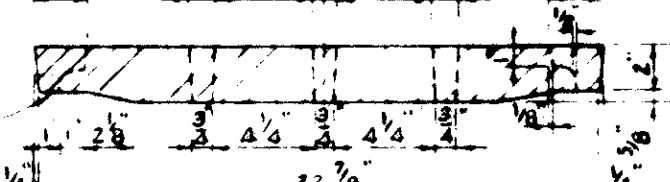
SECTION 'A-A'



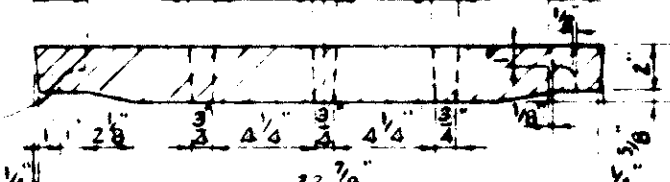
SECTION 'A-A'



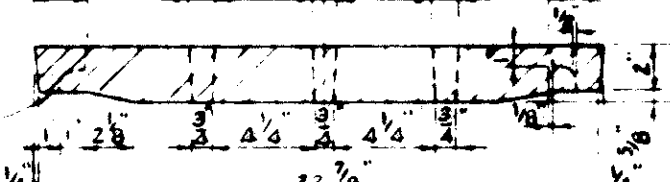
SECTION 'A-A'



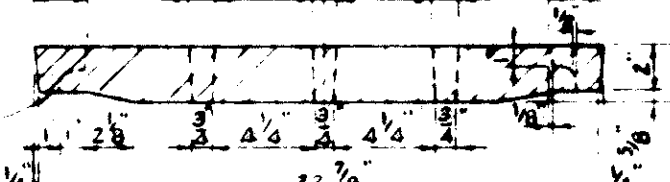
SECTION 'A-A'



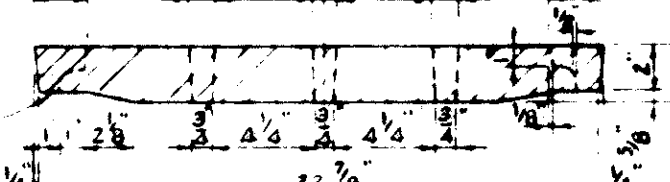
SECTION 'A-A'



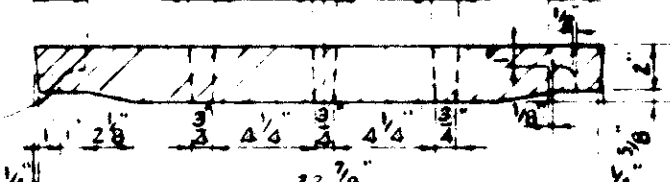
SECTION 'A-A'



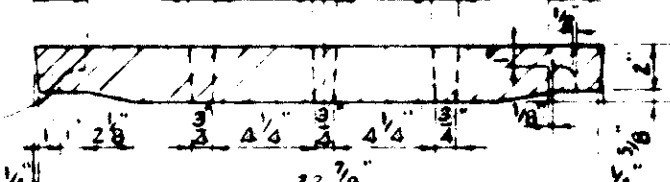
SECTION 'A-A'



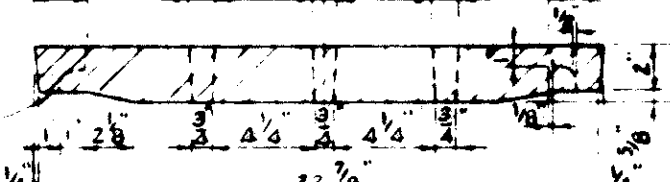
SECTION 'A-A'



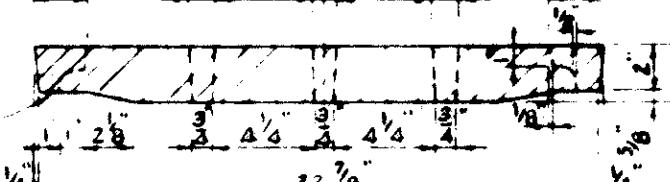
SECTION 'A-A'



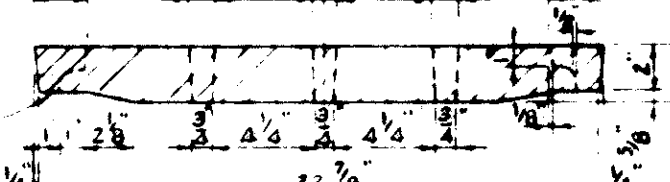
SECTION 'A-A'



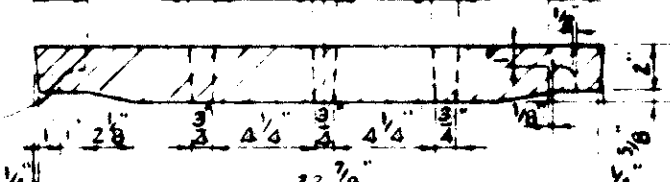
SECTION 'A-A'



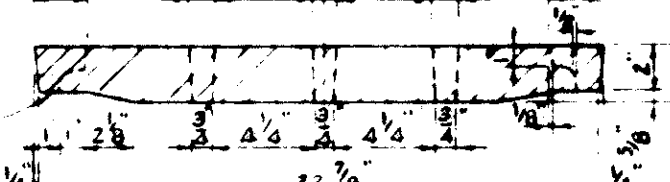
SECTION 'A-A'



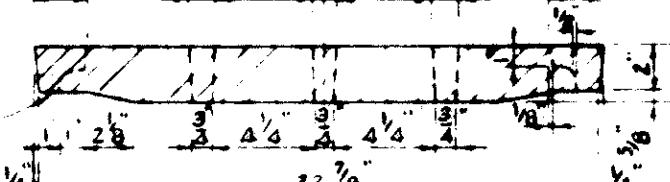
SECTION 'A-A'



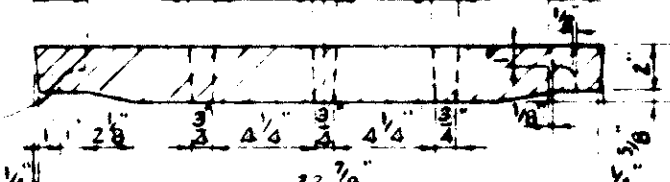
SECTION 'A-A'



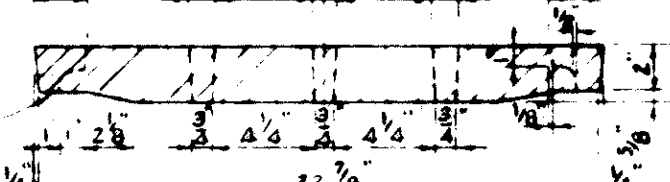
SECTION 'A-A'



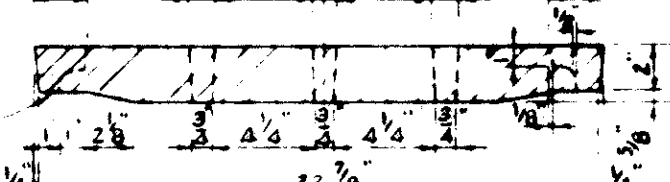
SECTION 'A-A'



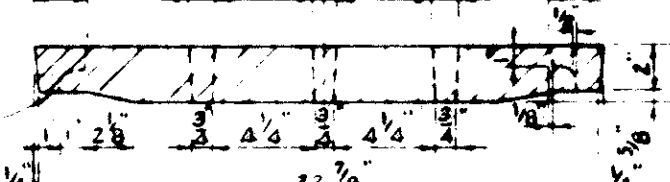
SECTION 'A-A'



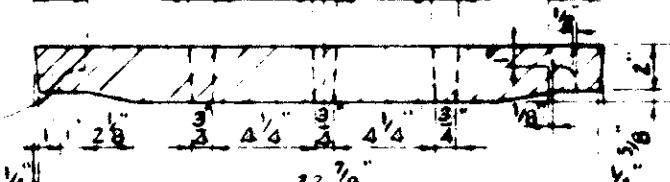
SECTION 'A-A'



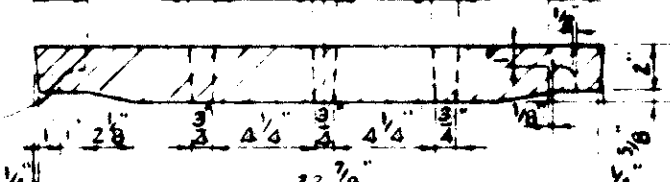
SECTION 'A-A'



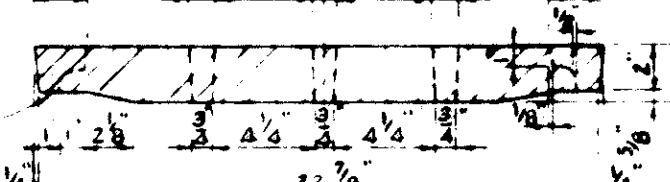
SECTION 'A-A'



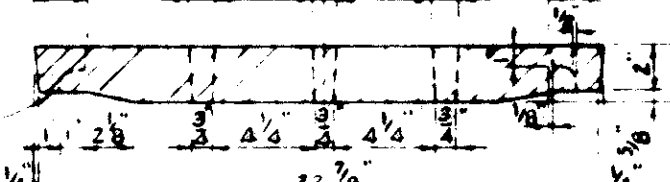
SECTION 'A-A'



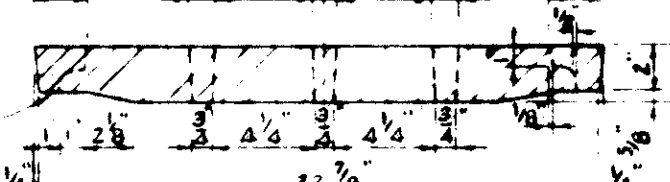
SECTION 'A-A'



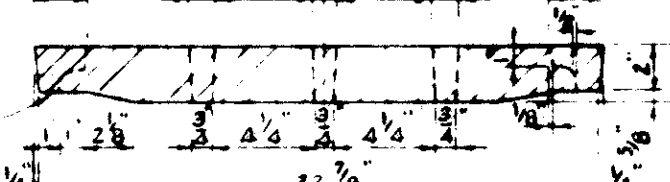
SECTION 'A-A'



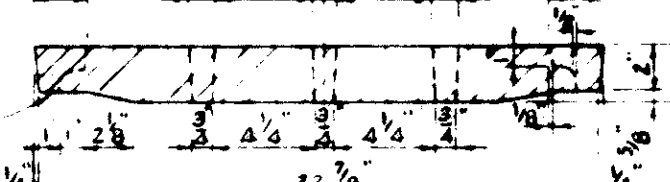
SECTION 'A-A'



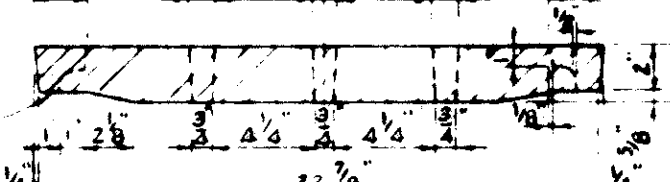
SECTION 'A-A'



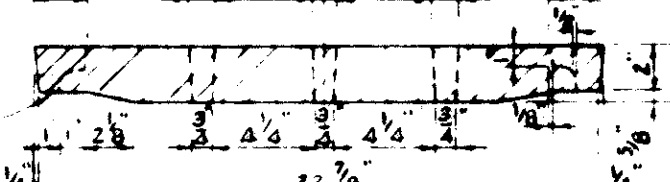
SECTION 'A-A'



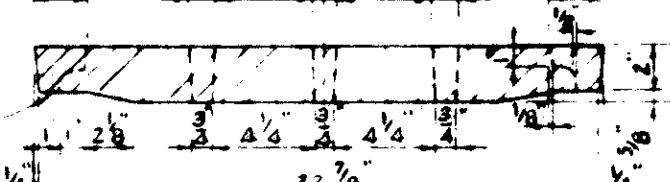
SECTION 'A-A'



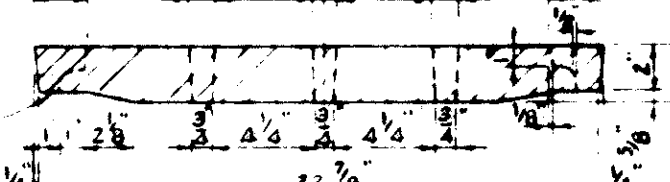
SECTION 'A-A'



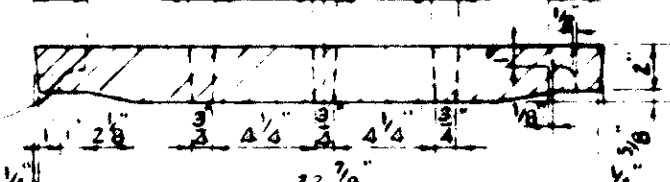
SECTION 'A-A'



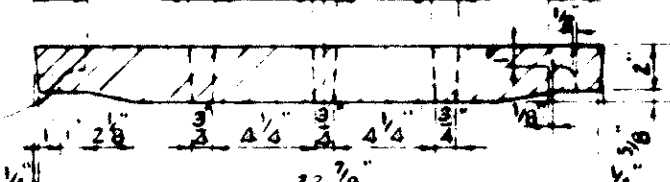
SECTION 'A-A'



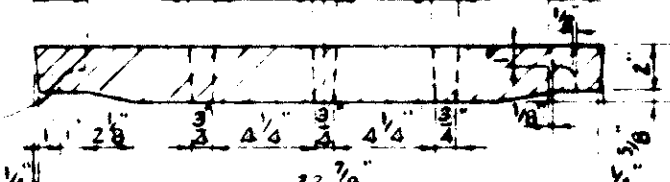
SECTION 'A-A'



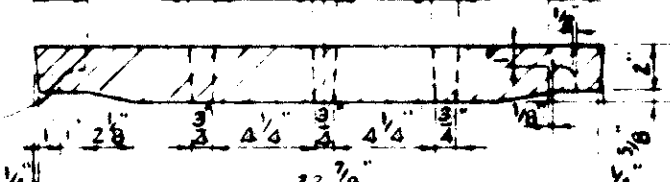
SECTION 'A-A'



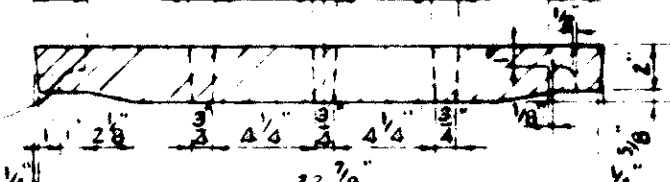
SECTION 'A-A'



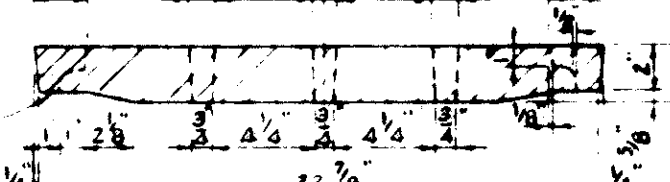
SECTION 'A-A'



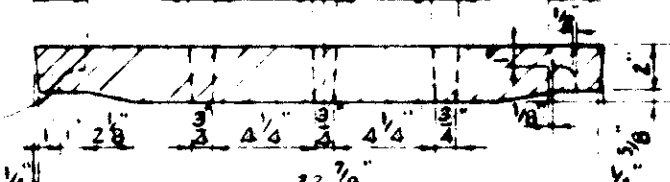
SECTION 'A-A'



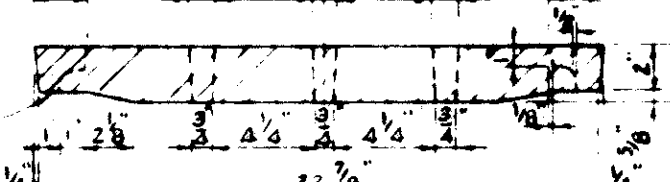
SECTION 'A-A'



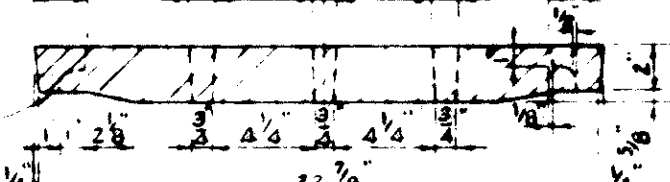
SECTION 'A-A'



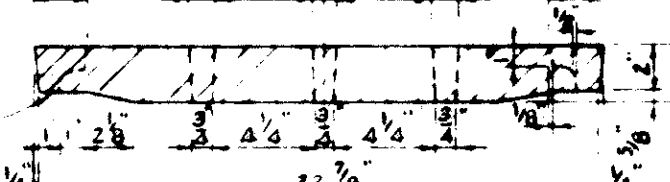
SECTION 'A-A'



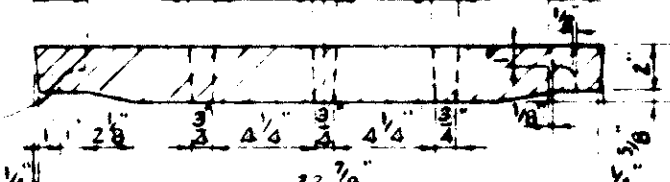
SECTION 'A-A'



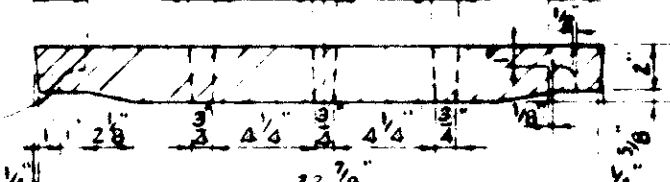
SECTION 'A-A'



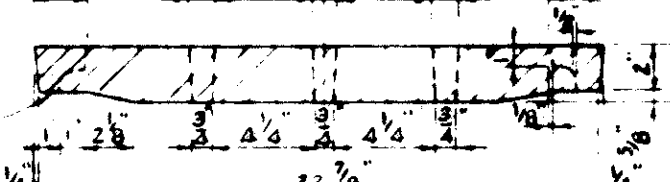
SECTION 'A-A'



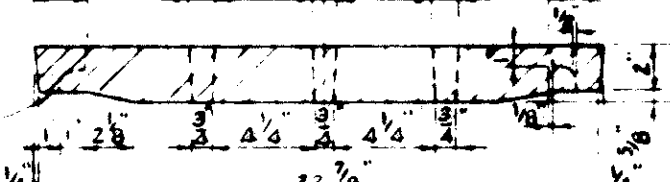
SECTION 'A-A'



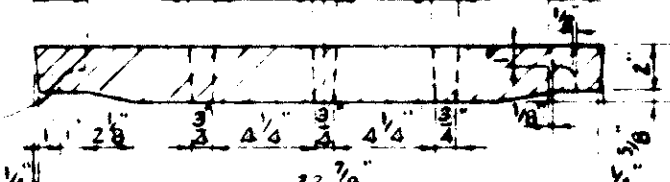
SECTION 'A-A'



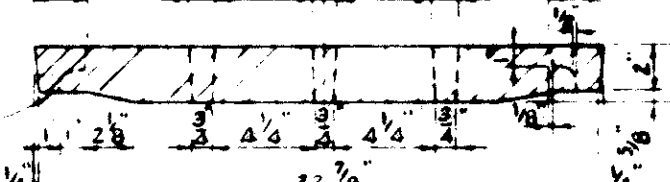
SECTION 'A-A'



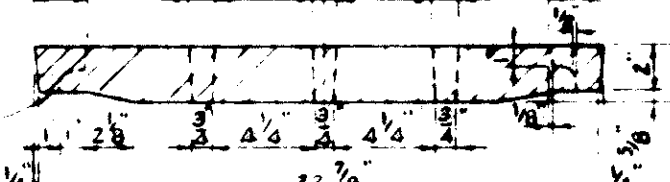
SECTION 'A-A'



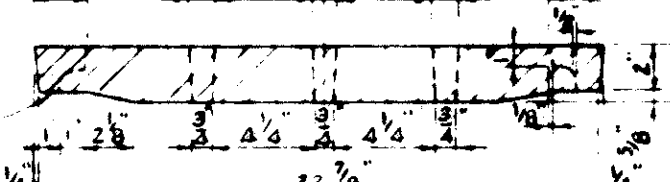
SECTION 'A-A'



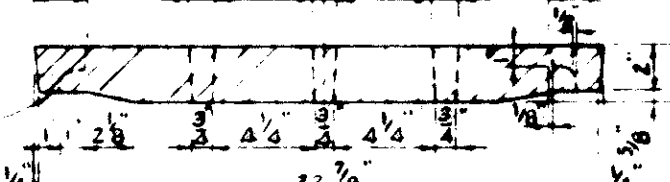
SECTION 'A-A'



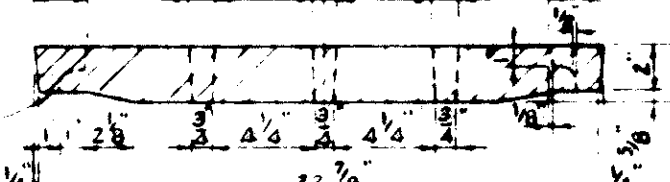
SECTION 'A-A'



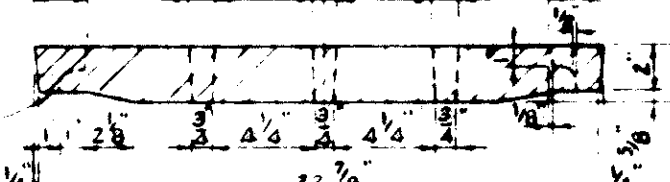
SECTION 'A-A'



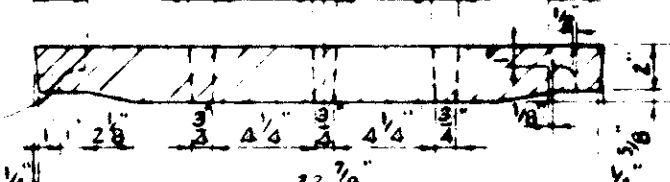
SECTION 'A-A'



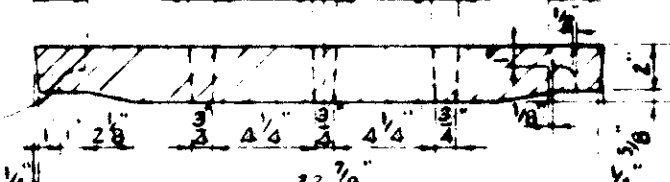
SECTION 'A-A'



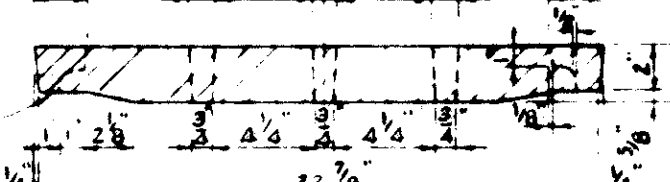
SECTION 'A-A'



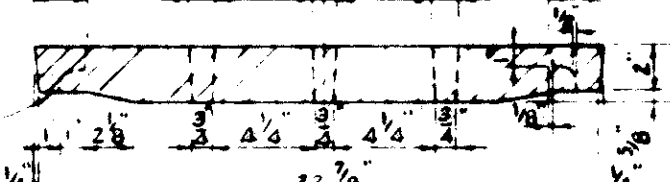
SECTION 'A-A'



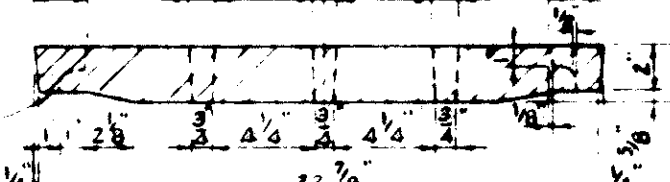
SECTION 'A-A'



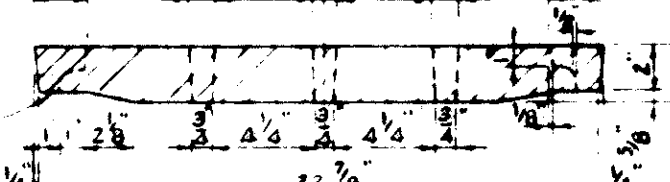
SECTION 'A-A'



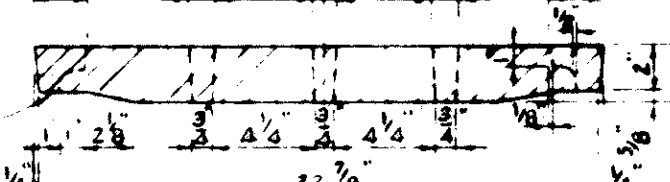
SECTION 'A-A'



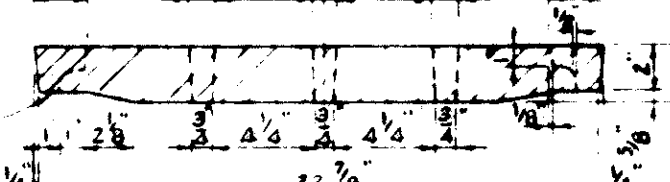
SECTION 'A-A'



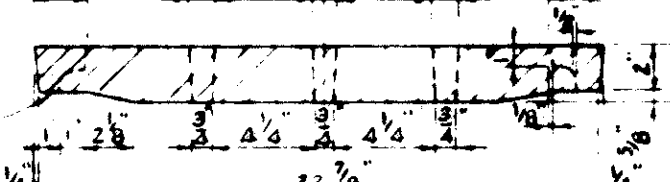
SECTION 'A-A'



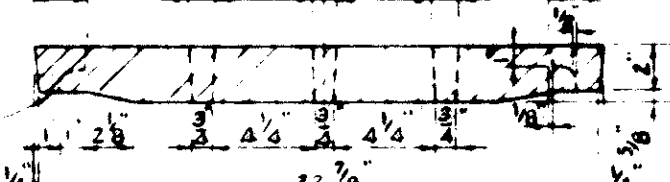
SECTION 'A-A'



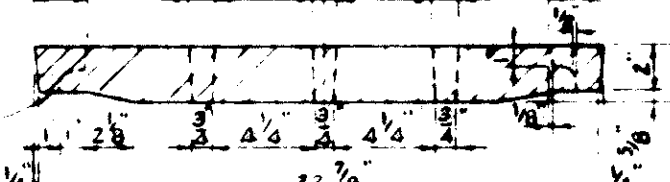
SECTION 'A-A'



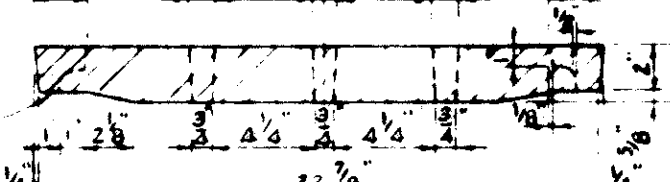
SECTION 'A-A'



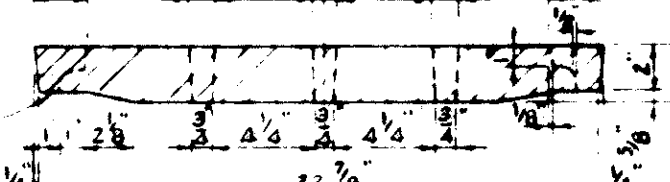
SECTION 'A-A'



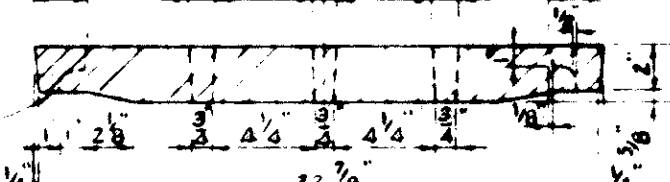
SECTION 'A-A'



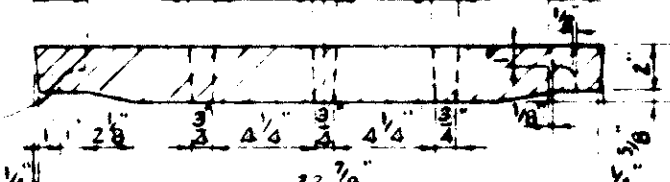
SECTION 'A-A'



SECTION 'A-A'



SECTION 'A-A'



SECTION 'A-A'